
SITHANDA UPLIFTMENT
PROJECTS

2019

ANNUAL REPORT

WWW.SITHANDA.ORG





TABLE OF CONTENTS



LETTER FROM THE DIRECTORS	03
SITHANDA OVEVIEW	06
THE CHILDREN OF EKUTHULENI	09
FOOD SUSTAINABILITY	12
SCHOOL FACILITIES	14
SCHOOL & COMMUNITY UPLIFTMENT	17
ECD CURRICULUM	20
FINANCIAL STATEMENTS	22
PARTNERS	29



A YEAR IN REVIEW

Letter from the Directors

By Ryan Tyack CT DIRECTOR

To see the world through the eyes of a child reminds us of the fullness of life.

Life at the Ekuthuleni Early Childhood Development centre continues to wonderfully take shape. As we look back on 2019 we get to acknowledge what has been created while we remind ourselves of how far we have come not only as an organisation, but as a committed community at large. The Sithanda Upliftment Projects brand has flourished over the past year and this is largely due to the incredible support that we have received from our followers and loyal supporters. A vision which was initially born amongst friends as a passion project, has gently crept into the hearts of many wonderful individuals, allowing for Sithanda to grow and move with an increased momentum and consistency as we honour the lives of our children and their immediate circles of support.

While much goes into the operational demands of our school, as well as the scheduling, planning and hosting of formal fund-raising events, we have received extremely generous donations from companies and individuals which has allowed us to continue living our mission. To our pleasant surprise, at times we have received contributions from those who quietly took it upon themselves to pursue personal fund-raising efforts and then to generously turn to Sithanda as the recipient of these proceeds. To every single person who continues to believe and share in this journey with us, we acknowledge you and thank you for the love you choose to give.



On the ground, we have lived the very real challenges of providing an education to young learners in a less fortunate South African community. We have loved in ways that have allowed us to grow as individuals and to truly appreciate the innocence of youth. We have learnt that when looking to uplift an entire community, we are able to go much further together than we could have ever walked alone.

2019 saw increased corporate involvement at Ekuthuleni with a number of businesses choosing to donate and more so volunteer their personal time towards our cause. This was a strong area of focus which we had previously discussed in 2018 and which we committ to build on in the 2019 calendar year. We believe that corporate South Africa have the ability and responsibility to contribute towards sustainable change in our country and it has been hugely warming to see progress in this regard.

Thank you to each business that has made the choice to join forces with Sithanda Upliftment Projects - you have directly contributed towards the irreplaceable gift of education.

Looking ahead at 2020 we aim to fine tune our fund-raising event offering by continuing to participate in those events which are currently popular and to add to this by creating new events of our own. Through partnerships and opportunities for collaboration we aim to take the many lessons we have learnt and the knowledge gained on our journey thus far to extend our reach and create lasting impact for other education mission-centred projects.

In reflecting, I feel it fitting and true to echo the words of Matthew Wickham from last year;

“Sithanda, means “WE LOVE” in isiZulu.

WE LOVE that we have this opportunity to develop the lives of young South Africans through Early Childhood Development education.

WE LOVE what we are able to provide for others and how we can uplift communities in need.

WE LOVE that we can collaborate with volunteers, businesses and other entities who share the same vision. And

WE LOVE that we can share a platform for anyone to show their own love. “

May this always remain.

May love always boldly lead.

Much love,
Ryan Tyack





SITHANDA OVERVIEW

Sithanda Upliftment Projects NPC (“Sithanda”) is a registered Non-Profit Organisation set to champion Early Childhood Development (ECD) Projects in underprivileged communities. Driven by passion and purpose with the common interest of giving back to the community, and are dedicated to making a difference to the lives of those less fortunate.

To date, we have successfully built our first all inclusive ECD facility in the Kwamashu Valley - Kwazulu Natal. This facility currently provides an education and the correct nutrition to 40 young children who previously did not have access to this love and support.

Sithanda predominantly serves, but is not limited to, the less fortunate communities in South Africa. Sithanda strives to provide all-inclusive ECD centres, which are environmentally friendly and includes formal educational curricula, safe buildings and sanitation facilities as well as unique approved subsistence opportunities and feeding programs. Each facility must have the means to be sustainably operated and managed.

The aim is to remain relevant, energy efficient, sustainable and to continuously progress in various industries in providing the best environment possible to the young children learning in our schools. It is important that we meet the all-inclusive aspect of our model in order to effectively bridge the gap between traditional vs. modern methods of education.

SITHANDA OVERVIEW

Strengths and Weaknesses of the South African Context

As is well known, much like the rest of Africa, South Africa is not immune to the challenges related to social-economic development and poverty alleviation. Nonetheless, there are numerous social impact initiatives in place and many of them have become well established. Therefore, Sithanda's value proposition can leverage from these initiatives.

The Government of the Republic of South Africa has prioritised early childhood development (ECD) since 1994. According to the National Development Agency South Africa (NDA) (2017), ECD has been recognised as one of the most powerful tools for breaking the intergenerational cycle of poverty in South Africa. Scientific evidence confirms the tremendous importance of the early years for human development and the need for investing resources to support and promote optimal child development right from conception.

Lack of opportunities and interventions, or poor-quality interventions, during early childhood can significantly disadvantage young children and diminish their potential for success.

WHY ECD EDUCATION?

Many children in SA do not have access to this basic human right. ECD is considered the most critical phase of learning for every human being. ECD is one of the most powerful tools for breaking the intergenerational cycle of poverty in South Africa. 84% of children aged between 0-4 years do not have access to ECD education, meaning approximately 5.6million children do not receive the stimulation and critical development required to allow them to reach their full potential. (UNICEF South Africa, 2007)

SITHANDA OVERVIEW

Early Childhood Development

There are approximately 8 million children from birth to 6 years old according to the 2014 Mid-Year Population estimates. The largest number is in Kwa-Zulu Natal (23%), Gauteng (20%) and lowest in Northern Cape (2%) and Free State (5%).

Whilst poverty levels have fallen by 15% since 2004 using the lower bound poverty level of R604.00 per person per month, about 58% of children are still deemed poor. The burden of poverty is distributed unequally across provinces; the majority of poor children are black, living predominantly in rural provinces such as Limpopo (76%), Eastern Cape (75%) and Kwa-Zulu Natal (67%).

Service provision is poor and affected by a combination of factors i.e. legislation that is not harmonised, insufficient funding, poor governance, including institutional arrangements, leadership and coordination (National Treasury, 2017). Building institutional capacity of ECD centre management, particularly in the areas of governance, management, financial management, fundraising, human resource management, report-writing is well supported by the NDA and the provincial Departments of Social Development.

THE CHILDREN OF EKUTHULENI

The reason why Sithanda drives forward and strives to create lasting impact is due to the little hearts who we are introduced to each year. Ekuthuleni ECD, meaning A 'Place of Peace', is our first successfully built facility, which opened on the 17th January 2018 and is now a loving facility providing an education and loving environment to approximately 40 children of ages 18 months to 5 years old. These beautiful souls now have an opportunity second to none, allowing them to focus on their dreams and to develop their potential.

The first 1000 days (0-2 years) are the most important for a child's brain development. By the age of five, 90% of a child's brain has been formed. Without adequate nutrition during this time period leads to developmental delays, poorer performance at school and greater susceptibility to disease and illness. KwaZulu-Natal province has a high prevalence of children who are stunted (i.e. low height-for-age) at 28.5%, mainly due to malnutrition.

The children of Ekuthuleni are provided with 2 meals per day. These are wholesome meals cooked at the school, which are provided in accordance with an approved meal plan that has been developed by a registered dietician. The meal offerings are cross-checked with Doris to ensure she is capable of correctly cooking these meals for the children.

Upon basic assessment of height and weight at the end of 2019, we have come to find that our children at Ekuthuleni are close to those standards of the World Health Organisation Guidelines. We hope that through our learning system and healthy eating plan that we will be able to optimize the growth phase of our children.



THE CHILDREN OF EKUTHULENI

Average Weight (Kg's)

Age and Gender	(Kg) 2018/2019	JAN 2020	WHO Standards
Boys 4-5years old	16.23	17.3	16.3-18.3
Girls 4-5years old	16.74	17.1	16.1-18.0
Boys 2-3 years old	11.68	13.4	12.2-14.2
Girls 2-3years old	14.28	13.1	11.5-13.9

Average Height (cm)

Age and Gender	2018/2019	JAN 2020	WHO Standards
Boys 4-5years old	99.85	99.3	103.3-110
Girls 4-5years old	101.33	97.2	102.7-109.4
Boys 2-3 years old	89.43	79.25	87.1-95.4
Girls 2-3years old	91.1	82.03	85.7-94.4

1) <http://www.statssa.gov.za/?p=10950>

2) Stats SA: General Household Survey data, Early Childhood Development in South Africa, 2016

3) WHO international Standards

WHO Weight/age Standards BOYS

WHO Height/Age Standards BOYS

WHO Weight/age Standards Girls

WHO Height/age Standards Girls



FOOD SUSTAINABILITY



In June 2019 Gateway SuperSpar came forward and put up their hand to take on majority of the responsibility of the Ekuthuleni feeding program. They graciously took on our list of monthly grocery requirements and not only did they met those requirements but made sure that we had extras to accommodate for both staff and children at the school.

Gateway SuperSpar have always prided themselves on the importance of caring for not only their valued customers but for all South Africans as well. With this partnership with Gateway SuperSpar we strive to get our children at Ekuthuleni to meet the WHO Standards and we believe this is possible.



Rise Against Hunger is an international hunger relief organization that distributes food and life-changing aid to the world's most vulnerable, mobilizing the necessary resources to end hunger by 2030. Once Sithanda met the evaluation process, Rise Against Hunger provided additional food sources to aid in feeding our kids.

They have volunteers who package millions of nutritious meal packs and who help distribute to partners worldwide.



Truda foods have also generously supported our feeding program with donations of their "My Life" Porridge product. This product has been a great addition to our Ekuthuleni breakfast menu.

FOOD SUSTAINABILITY



The iGardi Project is a fun and unique way to help increase the diversity of food and nutrition in underprivileged communities through their proven model for water-wise vegetable food gardening that educates and empowers individuals to benefit their community. We hope in the near future to use these veggie boxes, not only for food sustainability, but also as a method of generating income for our schools through the selling of excess produce.

The iGardi Project hosts a number of educational programs within communities to ensure that anyone is able to build these gardens cost effectively to grow their own nutritious food sustainably. By connecting volunteer teams, NGOs and providing avenues for investment, they ensure local community involvement, training and build community ownership.

The water-wise vegetable garden boxes are a unique and effective means of growing vegetables. They are self-contained raised beds with built-in reservoirs that supply water from the bottom up – ensuring minimal maintenance by only requiring watering every 2 to 3 weeks and achieving a massive water saving of up to 70% annually. The water reservoir is made up of round rocks and perforated pipe and is separated from the soil by a layer of landscaping fabric. Water is automatically wicked upwards towards the top of the soil medium to irrigate the plants, which encourages deeper root growth and more drought-resistant plants, while also significantly reducing the maintenance needs of the garden. The use of self-watering and drought resistant food gardens are particularly important in South Africa where water resources are limited.

SCHOOL FACILITIES



Through our partnership with Elangeni Buildings we have been able to provide a turn key solution for all of our Ekuthuleni facility. Elangeni Building facilitates the entire build phase and includes the electrical and plumbing requirements for the schools. Schools are designed as per the National regulations in order to accommodate 50 children.

The build includes facilities such as:

Classroom

Teachers office and class store room

Kitchen and food preparation area

Clean functional male and female ablutions.

Kitchen Store room



In 2019 we were privileged to gain a new partnership with Leicester flooring and Top Carpets who blessed our school with colorful, fun carpets for our classrooms and beautiful flooring for both our kitchen and bathrooms to ensure that our school is neat and looking professional.





SCHOOL & COMMUNITY UPLIFTMENT

With the assistance of volunteers, this has made it so easy and possible!

We have found that donating time is just as important as monetary donations!

1 *Pre-loved clothes sales*

Sithanda Upliftment Projects accepts and collects good quality second hand clothing, which we sell to underprivileged communities at a nominal fee of R10 per item - regardless of what it is – from shoes to dresses to hats. All items are cross-checked before being put out for sale and must meet the requirements and standards we have set as we aim to make this a very dignifying experience for all. No clothes with holes or stains and no dirty jocks or lonely socks.

We undergo sales every second month where all funds raised from the pre-loved clothes sales, on average R8000 per sale, is then put towards operational costs and maintenance requirements at the Ekuthuleni ECD.

Through this initiative we hope to provide the local community with access to good quality clothing for themselves and their loved ones at an extremely affordable price. We hope to not only sell the clothes for use, but hope that it can stimulate entrepreneurship in the community through reselling at a slightly higher price.



SCHOOL & COMMUNITY UPLIFTMENT

2 Corporate Days and CSR initiatives:

We are always appreciative of those companies who wish to partake in community outreach programs and upliftment programs and we encourage them to get involved on site. During corporate days we allow for companies to come up with their own ideas as how they would like to contribute and for those companies that are unsure of how to help, we implement various campaigns to which the companies can assist with (Eg. Blanket drives, School Bag campaign, Outdoor activities) Corporates and Companies who we would like to thank and give special mention to is the following:



RAINMAKER MARKETING

Rainmaker came forward for a CSR day to tackle a renovation to the jungle gym which was originally built in 2017. They removed and replaced all wooden planks on the ramp and platform of the jungle gym. Ensuring that the children will be safe when making use of it. They also brought through a team of staff members to look after and feed the kids at the school for the day.



RAINMAKER MARKETING

Gateway SuperSpar provided a fun day worth of activities at the school bringing through the first months Groceries as well as ball and toys for the children to enjoy!



● ECD CURRICULUM ●



THE UNLIMITED CHILD

We were so grateful when we had been notified of our acceptance to collaborate with The Unlimited Child (TUC) to provide our schools with their ECD education curriculum for a minimum of 3 years. TUC is a national, non-profit initiative and now a tried, tested and proven model. They give young children in disadvantaged crèches a chance to live an incredible life!

- 4 age-appropriate toolkits

The Unlimited Child has 4 programmes designed to enrich children of various age groups. Our programmes for babies, toddlers and pre-Grade R children are aligned to National Early Learning Development Standards (NELDS). Our Grade R programme is aligned to Curriculum and Assessment Policy Statement (CAPS).

- The Practitioners' Guides

With assistance from renowned early childhood development specialist Freda Wilkens, the content and layout of our practitioners' guides are simple and easy to follow. Each day has its own page and all 200 days of the school year are included. The sections are divided into life skills, mathematics, life science and language. Each day ends with a story that the caregiver can share with the children. This layout is the same across all the programmes.

- Caregiver Training

The programme kicks-off with a hands-on, 4-day training session. From the day-to-day practitioners' guide, to the daily routine and learning through play with educational toys – they train our caregivers how to make learning, fun.

- On the ground Monitoring support

At least once a month, Monitors visit each of the crèches reached to ensure that the high standards are being maintained. While they provide ongoing guidance and support to caregivers, the Monitors first priority is to ensure that our programme is being used effectively on a daily basis. Maintaining standards is of the utmost importance to the long term success of The Unlimited Child and the schools they collaborate with.

● ECD CURRICULUM ●

MONTESORRI LIFE PRE-PRIMARY

We have been so fortunate to be associated with Montessorri Life together we have been able to create a twinning partnership with them. Which involves the following:

Upskilling staff members through Teacher Exchange

Through this we are allowed to expose our staff to a functional facility and for them to learn through this experience and to broaden their knowledge of educating children in different environments. Montessorri Life have also offered certificates recognizing their time at the school as acknowledgement for their learning experience.

School excursions

Montessorri Life have offered to take as their sister school to help upskill our staff members but have also offered provided us with the means to give the children of Ekuthuleni a chance to have an excursion to Montessori. On these excursions the children are befriended with a child from Ekuthuleni for the day to show them around and to enjoy some fun filled activities together at the Montessori premises. At another point of the year we are also able to welcome the children of Montessori to the Ekuthuleni ECD.

Christmas boxes

Going into December and the closing of school - the staff, children and families of Montessori have also partnered with us to hand out Christmas boxes for the staff and children of Ekuthuleni ECD. This generous and sincere gesture is the true indication of a broad and selfless partnership.

Planting of the school tree

After our Christmas party this year - Sithanda, Ekuthuleni and Montessori had hands involved in planting a tree on the Ekuthuleni property. This will not only provide shade and aesthetics to the school but will be a representation of how the bonds between the 2 school facilities are growing together alongside the growth of the children which who we both serve.



FINANCIAL STATEMENTS

WG
Waller Gilliver

Chartered Accountants (South Africa)

18, Calypso Centre
2, Kruger Rand
Richards Bay

P O Box 10491
Meerensee
3901

Tel no: 035 789 1257
Fax no: 035 789 3274

REPORT OF THE ACCOUNTING OFFICER TO THE DIRECTORS OF SITHANDA UPLIFTMENT PROJECTS NPC FOR THE YEAR ENDED 28 FEBRUARY 2019

We have performed the duties of Accounting Officer to Sithanda Upliftment Projects NPC as required by regulation 29 (4)(b)(ii) of the Companies Act, 2008 for the period ended 28 February 2019.

No audit is required by to be carried out and no audit was conducted. Accordingly, we do not imply or express an opinion or any other form of assurance on the financial statements.

The annual financial statements set out on pages 4 to 10 are the responsibility of the directors.

We have determined that the annual financial statements are in agreement with the accounting records and have done so by adopting such procedures and conducting such enquiries in relation to the accounting records as is considered necessary in the circumstances. We have also reviewed the accounting policies which have been represented to us as having been applied in the preparation of the financial statements, and we consider that they are appropriate to the business.

N M Waller

N M Waller

Date: 8/1/2020

Sithanda Upliftment Projects NPC

(Registration number: 2017/448543/08)

Annual Financial Statements for the year ended 28 February 2019

Directors' Report

The directors have pleasure in submitting their report on the annual financial statements of Sithanda Upliftment Projects NPC for the year ended 28 February 2019.

1. Business and Operations

The organisation's business and operations and the results thereof are clearly reflected in the attached financial statements. No material fact or circumstance has occurred between the accounting date and the date of this report.

The objective of this NPC is:

To shape the future of South Africa by uniting like-minded, committed individuals to undertake compassionate, practical, life changing interventions which alleviate the suffering of the poor and needy - engaging directly with local disadvantaged communities to provide support, hope and upliftment.

2. Directors

The directors in office at the date of this report are as follows:

G Ruttlell
M J Wickham
N M Braby
R Tyack
S T Hagemann

Resigned 11 May 2018

3. Accounting Officer

Natalie Mackay Waller will continue in office for the forthcoming year.

The annual financial statements set out on page 4 - 10, which have been prepared on the going concern basis, were approved by the directors on 08 January 2020, and were signed on its behalf by:

Approval of annual financial statements

G Ruttlell

G Ruttlell

M J Wickham

M J Wickham

N M Braby

N M Braby

R Tyack

R Tyack

FINANCIAL STATEMENTS

Sithanda Upliftment Projects NPC

(Registration number: 2017/448543/08)

Annual Financial Statements for the year ended 28 February 2019

Statement of Comprehensive Income

	Note(s)	2019 R	2018 R
Revenue			
Donations received		67 460	347 596
94.7 Cycle race - fundraiser		33 745	49 301
Golf day - fundraiser		144 762	-
Midmar swim - fundraiser		262 505	164 798
MySchool organisation funds		7 616	-
Roll Egoli - fundraiser		16 433	-
Second-hand clothing income		30 135	-
Warrior race - fundraiser		59 940	-
		622 596	561 695
Operating expenses			
Accounting fees		9 875	6 000
Advertising		3 759	2 935
Amortisation on leasehold improvements		47 778	11 399
Bank charges		3 783	892
Consulting fees		-	11 400
Courier and postage		260	72
Curriculum		16 924	-
Donations		4 000	-
Electricity and water		7 400	-
Fuel		2 908	1 621
Fundraiser costs - 94.7 Cycle race		8 787	18 320
Fundraiser costs - Golf day		95 496	-
Fundraiser costs - Midmar swim		67 464	48 472
Fundraiser costs - Roll Egoli		6 410	-
Fundraiser costs - Warrior race		22 055	-
Gifts		370	-
Legal fees		9 434	9 243
Loss due to theft		3 254	-
Printing and stationery		1 244	2 398
Subscriptions		2 988	249
Supplies for the Ekuthuleni school		29 583	4 174
Telephone and fax		913	411
Training		25 391	6 643
Travel - local		26 347	3 076
Wages		101 797	33 950
		498 220	161 255
Operating profit		124 376	400 440
Interest paid - directors		(5 727)	-
Total comprehensive income for the year		118 649	400 440

FINANCIAL STATEMENTS

Sithanda Upliftment Projects NPC

(Registration number: 2017/448543/08)

Annual Financial Statements for the year ended 28 February 2019

Statement of Financial Position

	Note(s)	2019 R	2018 R
Assets			
Non-Current Assets			
Property, plant and equipment	2	414 049	330 581
Current Assets			
Prepayments	3	-	21 290
Cash and cash equivalents	4	148 934	54 569
		148 934	75 859
Total Assets		562 983	406 440
Equity and Liabilities			
Equity			
Retained surplus		519 089	400 440
Liabilities			
Non-Current Liabilities			
Loans from shareholders	5	37 394	-
Current Liabilities			
Trade and other payables	6	6 500	6 000
Total Liabilities		43 894	6 000
Total Equity and Liabilities		562 983	406 440

FINANCIAL STATEMENTS

Sithanda Upliftment Projects NPC

(Registration number: 2017/448543/08)

Annual Financial Statements for the year ended 28 February 2019

Statement of Cash Flows

	Note(s)	2019 R	2018 R
Cash flows from operating activities			
Cash receipts from stakeholders		577 845	561 695
Cash paid to suppliers and employees		(383 901)	(165 146)
Cash generated from operations	8	193 944	396 549
Interest paid - directors		(5 727)	-
Net cash from operating activities		188 217	396 549
Cash flows from investing activities			
Additions to property, plant and equipment	2	(131 247)	(341 980)
Cash flows from financing activities			
Repayment of shareholders loan		37 394	-
Net cash from financing activities		37 394	-
Total cash movement for the year		94 365	54 569
Cash at the beginning of the year		54 569	-
Total cash at end of the year	4	148 934	54 569

FINANCIAL STATEMENTS

Sithanda Upliftment Projects NPC

(Registration number: 2017/448543/08)

Annual Financial Statements for the year ended 28 February 2019

Notes to the Annual Financial Statements

	2019 R	2018 R
--	-----------	-----------

2. Property, plant and equipment

	2019			2018		
	Cost or revaluation	Accumulated amortisation	Carrying value	Cost or revaluation	Accumulated depreciation	Carrying value
Leasehold improvements	473 227	(59 178)	414 049	341 980	(11 399)	330 581

Reconciliation of property, plant and equipment - 2019

	Opening balance	Additions	Amortisation	Closing balance
Leasehold improvements	330 581	131 247	(47 778)	414 049

Reconciliation of property, plant and equipment - 2018

	Opening balance	Additions	Amortisation	Closing balance
Leasehold improvements	-	341 980	(11 399)	330 581

3. Prepayments

Golf day - fundraiser	-	21 290
-----------------------	---	--------

4. Cash and cash equivalents

Cash and cash equivalents consist of:

Petty cash	-	254
First National Bank	148 934	54 315
	<u>148 934</u>	<u>54 569</u>

5. Loans to (from) shareholders

G Ruttell	(21 371)	-
N Braby	(16 023)	-
	<u>(37 394)</u>	<u>-</u>

The above loans are unsecured, bear interest linked to prime and have no fixed terms of repayment.

6. Trade and other payables

Accruals	6 500	6 000
----------	-------	-------

7. Taxation

In terms of section 10(1)(c)(N) of the Income Tax act, the public benefit organisation is exempt from income and other related taxes. Therefore no provision for taxation has been made.

Sithanda Upliftment Projects NPC

(Registration number: 2017/448543/08)

Annual Financial Statements for the year ended 28 February 2019

Accounting Policies

1. Basis of preparation and summary of significant accounting policies

The annual financial statements have been prepared on a going concern basis in accordance with the Companies Act 71 of 2008. The annual financial statements have been prepared on the historical cost basis, and incorporate the principal accounting policies set out below. They are presented in South African Rands.

1.1 Property, plant and equipment

Property, plant and equipment are tangible assets which the company holds for its own use or for rental to others and which are expected to be used for more than one period.

Property, plant and equipment is initially measured at cost.

Cost includes costs incurred initially to acquire or construct an item of property, plant and equipment and costs incurred subsequently to add to, replace part of, or service it. If a replacement cost is recognised in the carrying amount of an item of property, plant and equipment, the carrying amount of the replaced part is derecognised.

Property, plant and equipment is subsequently stated at cost less accumulated depreciation and any accumulated impairment losses, except for land which is stated at cost less any accumulated impairment losses.

The useful lives of items of property, plant and equipment have been assessed as follows:

Item	Average useful life
Leasehold improvements	10 years

1.2 Revenue

Revenue is recognised to the extent that the company has transferred the significant risks and rewards of ownership of goods to the buyer, or has rendered services under an agreement provided the amount of revenue can be measured reliably and it is probable that economic benefits associated with the transaction will flow to the company. Revenue is measured at the fair value of the consideration received or receivable, excluding sales taxes and discounts.

Interest is recognised, in profit or loss, using the effective interest rate method.

1.3 Cash flows

For the purposes of the cash flow statement, cash includes cash on hand, deposits held on call with banks, investments in money market instruments and bank overdrafts.

1.4 Comparative figures

Where necessary, comparative figures have been adjusted to conform with any changes in presentation in the current year.

Comparative figures for the prior year are based on a 4 month financial period.

FINANCIAL STATEMENTS

Sithanda Upliftment Projects NPC

(Registration number: 2017/448543/08)

Annual Financial Statements for the year ended 28 February 2019

Statement of Changes in Equity

	Retained surplus R	Total equity R
Balance at 01 March 2017	-	-
Total comprehensive income for the year	400 440	400 440
Balance at 01 March 2018	400 440	400 440
Total comprehensive income for the year	118 649	118 649
Balance at 28 February 2019	519 089	519 089

Sithanda Upliftment Projects NPC

(Registration number: 2017/448543/08)

Annual Financial Statements for the year ended 28 February 2019

Notes to the Annual Financial Statements

	2019 R	2018 R
8. Cash generated from operations		
Profit before taxation	118 649	400 440
Adjustments for:		
Amortisation	47 778	11 399
Interest paid - directors	5 727	-
Changes in working capital:		
Prepayments	21 290	(21 290)
Trade and other payables	500	6 000
	193 944	396 549

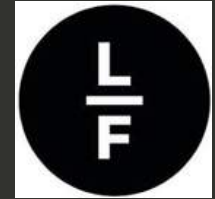


● PARTNERS ●



We would like to give special mention to particular companies and organisations who we have successfully partnered with:

- Elangeni Building - Building Contractor
- Gateway SuperSpar - Food
- Rainmaker Marketing - Online Marketing
- Carpeting and flooring - Leicester flooring
- Fencing Supplier and Contractor – Hendok and Conrite
- Igardi Project – vegetable garden solution
- Water tank supplier - Mica Ballito
- Medical and Fire safety installation – Fire Doc.
- Learning Program – The Unlimited Child
- Hygiene solutions – Geochem
- Paint – Shaves paint
- Internet service provider – Broadlink
- IT Supplier and Service Provider – Simplicity Internet Solutions
- Storage Container - Shoprite (Container) Zenzele Truck bodies (Refurbishing and maintenance) Clarks Forklifts (Delivery)
- Bread supply – Just Flour
- Grass – Evergreen turf
- School shoes – Jim green footwear.
- Lego learning material – Lego Foundation
- Insurance – Comprehensive choice







SITHANDA UPLIFTMENT PROJECTS

www.sithanda.org

Sithanda Upliftment Projects | LinkedIn

Sithanda Upliftment Projects | Facebook

Sithanda Upliftment Projects | Instagram

For more information please email: info@sithanda.org